

 The **Stoneview**

Elevation A • 3,325 sq.ft.

Elevation B • 3,258 sq.ft.

50'
SERIES

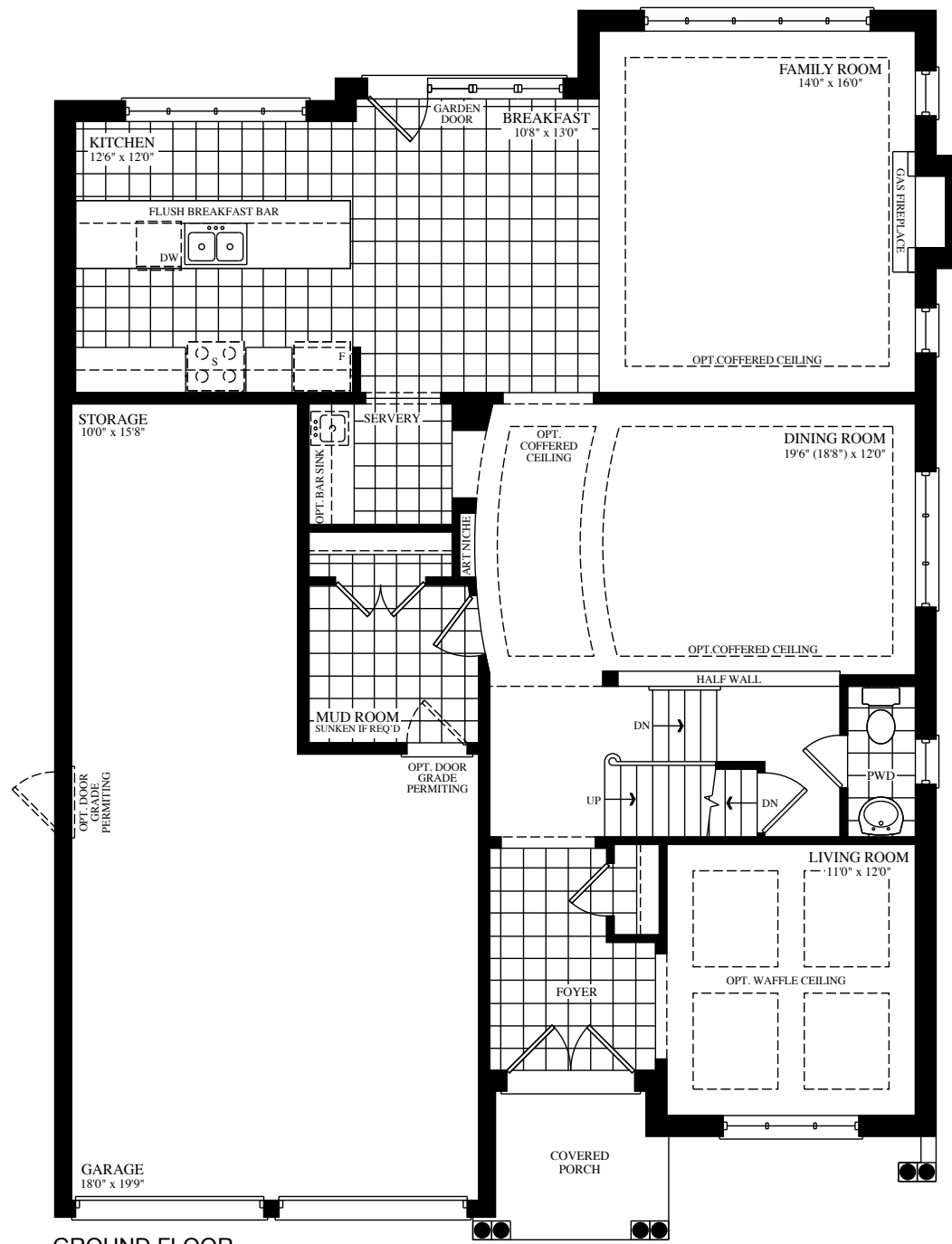
50-5



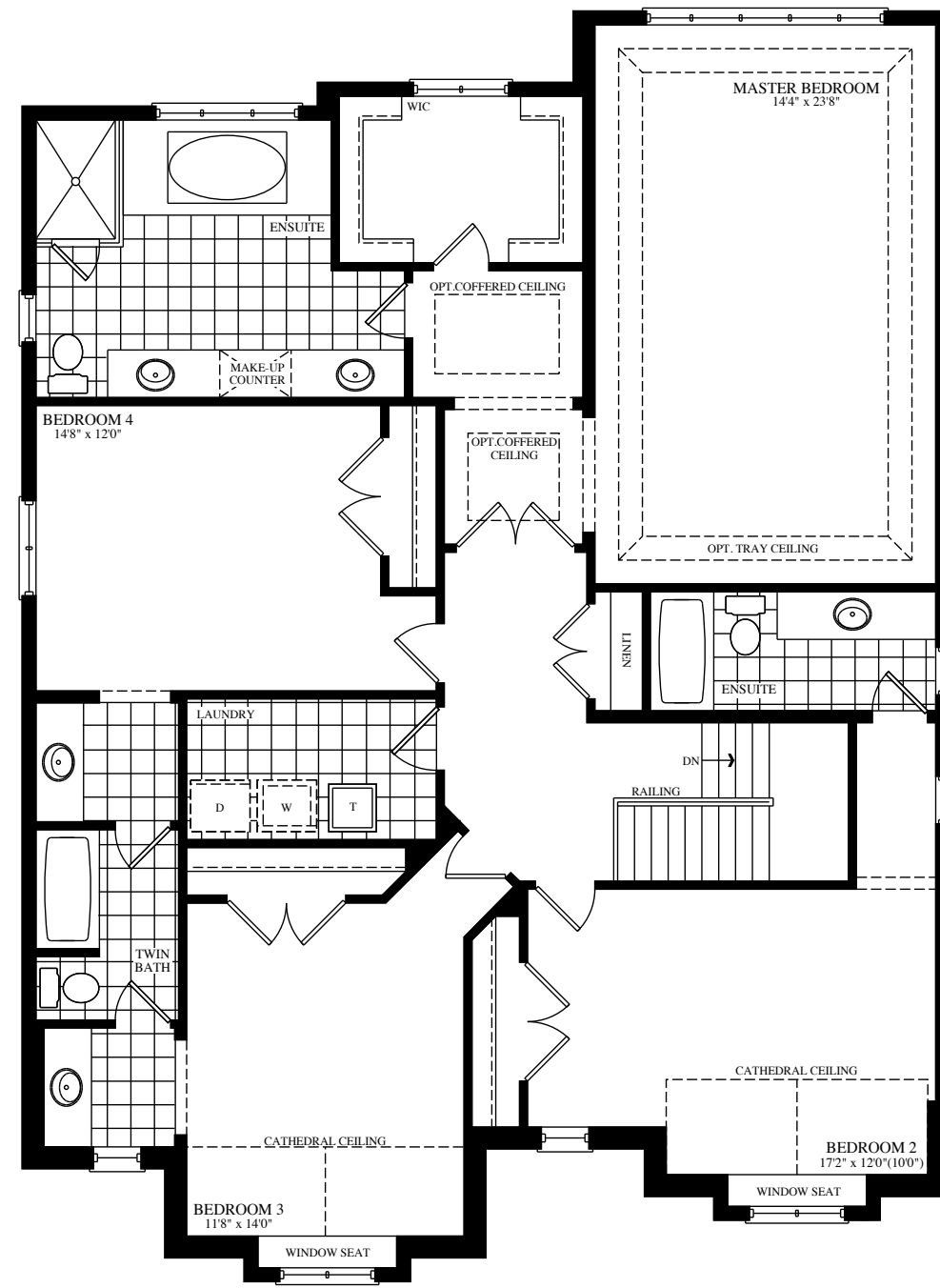
Elevation A • 3,325 sq.ft.



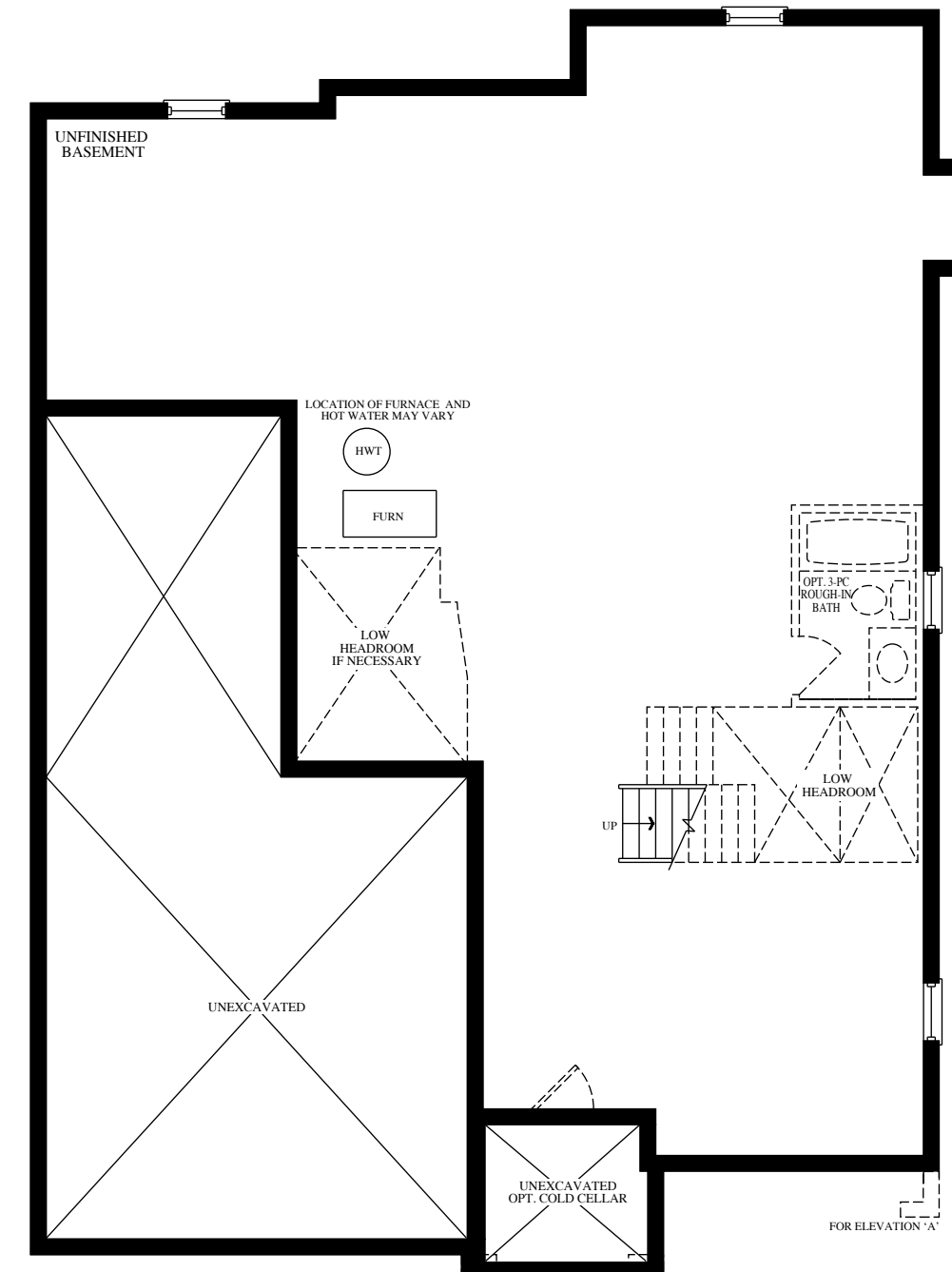
Elevation B • 3,258 sq.ft.



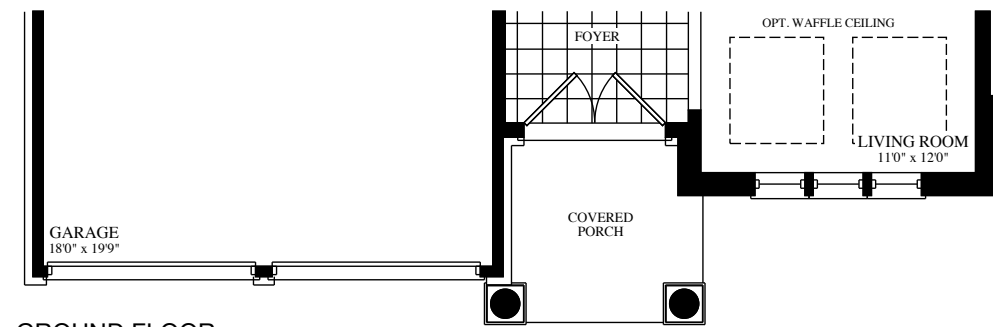
GROUND FLOOR
ELEVATION A



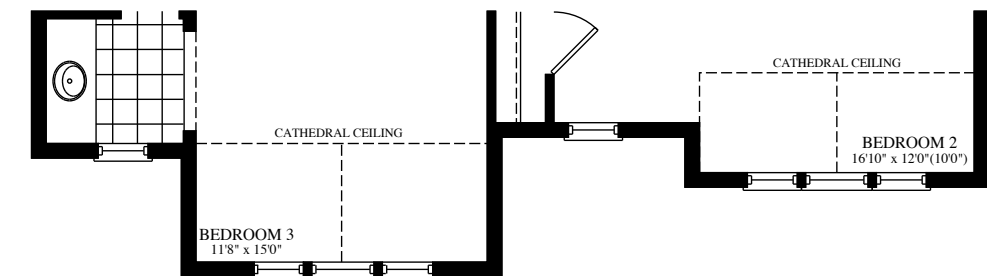
SECOND FLOOR
ELEVATION A



BASEMENT ELEVATION A & B



GROUND FLOOR
ELEVATION B



SECOND FLOOR
ELEVATION B